



**Before returning this product  
to the store of purchase**

**Contact Dee Zee if you experience the following problems:**

- Missing Parts
- Installation Problems/Questions
- Warranty Questions

**1.800.779.2102**

Hours of operation: 8am - 5pm CST, Mon-Friday

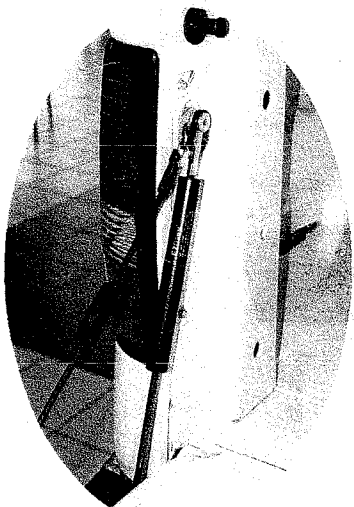
Review complete warranty policy and register your product at:

**[www.deeze.com/warranty.php](http://www.deeze.com/warranty.php)**

**EZDOWN Kit  
Installation Instructions**

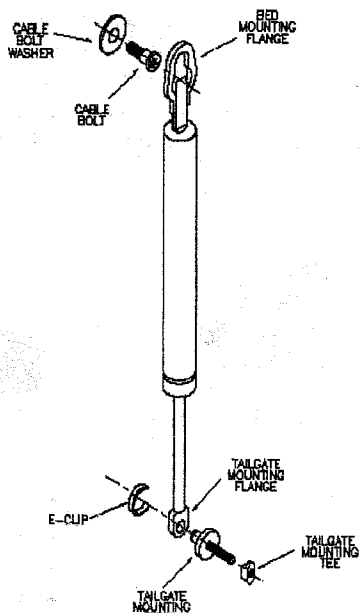
**Dodge 1500**

**2002-Present**



**Kit Components**

**Figure 1**



Package should include:

Co. ID	P/N	Qty
Damper	8357WF	1
Foam	P2152XH	1
Washer	P2153XC	1
Cable Tie	P2147XP	1
TGM Bolt	P5312YQ	1
Cable Bolt	P3335YF	1
E-Clip	5223YF	1
Shrink Sleeve	P2161XG	1
3mm Wrench	P2151XM	1
T45 Wrench	P6795XC	1
Instruction Sheet	P2158XE	1

**STABILUS  
EZDOWN®**

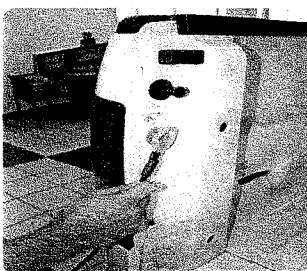
*The smoothest way to lower your  
tailgate*

Visit our website for a video guide to  
installing the damper. It's EZ, just  
go to [www.ezdown.com](http://www.ezdown.com) and click on  
INSTALL VIDEO.

The proceeding is not a warranty. If you have  
specific warranty questions, contact your dealer for  
warranty information and limitations, or visit  
[www.ezdown.com](http://www.ezdown.com). QUESTIONS? Visit our web site  
at [www.ezdown.com](http://www.ezdown.com) or call 52.844.411-0776

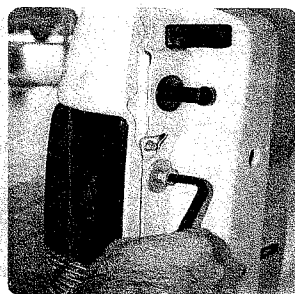
**Step 1: Remove Safety Cable**

Open tailgate. Remove the safety cable's mounting flange from the truck bed's cable bolt (**DRIVER SIDE ONLY**). Do NOT remove safety cable from the tailgate's cable-mounting bolt.



**Step 2: Replace Cable Bolt**

Remove cable bolt and washer from truck bed's side panel using provided Torx T45 wrench.

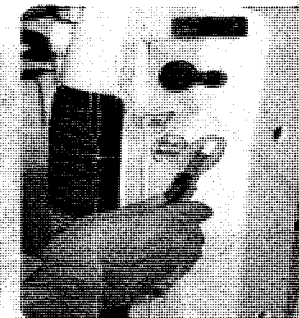
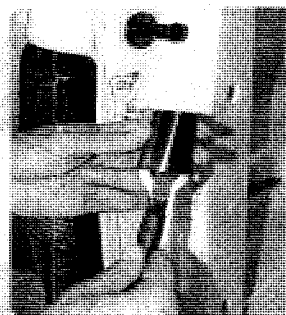


Slide new cable bolt washer onto the threaded end of the new cable bolt. Insert new bolt into truck's bedside panel and tighten cable bolt with Torx T45 wrench.



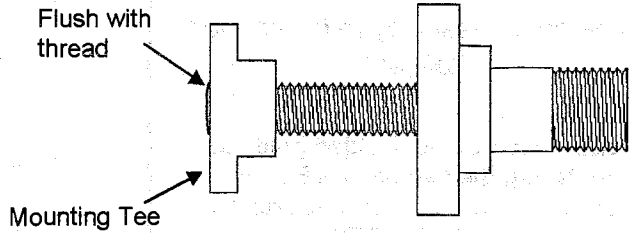
**Step 3: Attach Safety Cable**

Slide that shrink sleeve over the removed end of the safety cable and then re-attach safety cable to the newly installed cable bolt. Note: cable mounting flange should rest in groove closest to the truck bed and clip should rest below the groove.

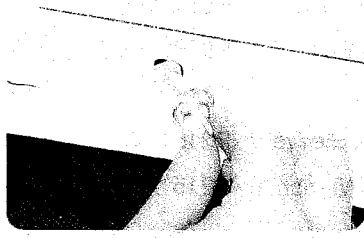


#### Step 4: Install Tailgate Mounting Tee and Bolt

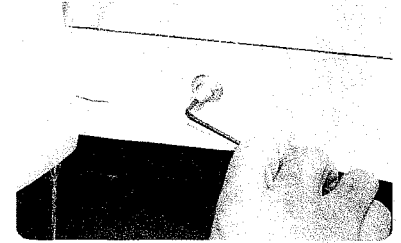
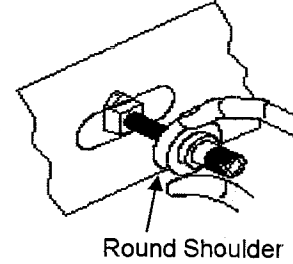
Thread the tailgate mounting tee onto the tailgate mounting bolt until the back of the mounting tee is flush with the end of the thread. Note: the orientation of the mounting tee shoulder should face on the mounting bolt head.



Locate the pre-existing oblong hole on the tailgate's side wall (driver's side). Angle and insert the tailgate mounting tee so the entire tee nut fits inside the hole. Due to varying paint thickness, the fit may be tight.



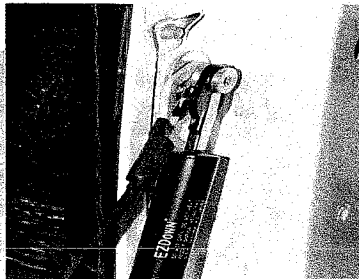
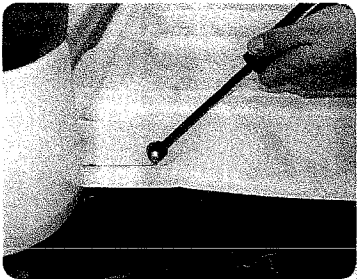
Once the mounting tee is in the oblong hole, rotate the tee 90 degrees and align the square shoulder on the mounting tee by pulling towards you. Finger tighten mounting bolt until the round shoulder engages the tailgate. Use included 3mm Allen wrench to tighten tailgate mounting bolt. Do not over tighten because damage to the tailgate mounting bolt may occur.



#### Step 5: Install EZDOWN Tailgate Damper

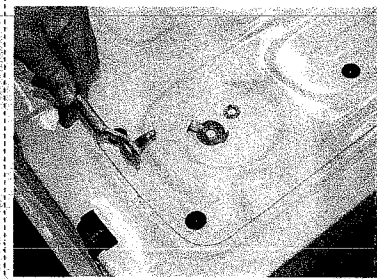
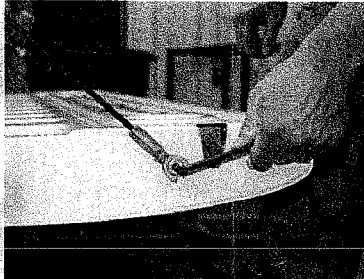
Install small end of EZDOWN Damper onto the tailgate mounting bolt that was just installed and use E-Clip to lock in place.

Attach damper mounting flange to the truck bed's cable bolt. Be sure the flange rests in the groove farthest from the truck bed and the clip rests below the groove.



#### Step 6: Remove Safety Cable and Cable travel Limit washer from Tailgate

Remove the safety cable bolt from the driver's side of the tailgate. Remove the cable travel limit washer.



#### Step 7: Attach Safety Cable to Tailgate

Re-attach safety cable to the tailgate without cable travel limit washer. Tighten bolt.

